



Model: MJ20

Fuel Type: Lithium Electric

Side Shift: Yes

Capacity: 2000kgs

Lift Height 4.6m – 12.5m

Mast Type: 3 Stage Full Free Lift

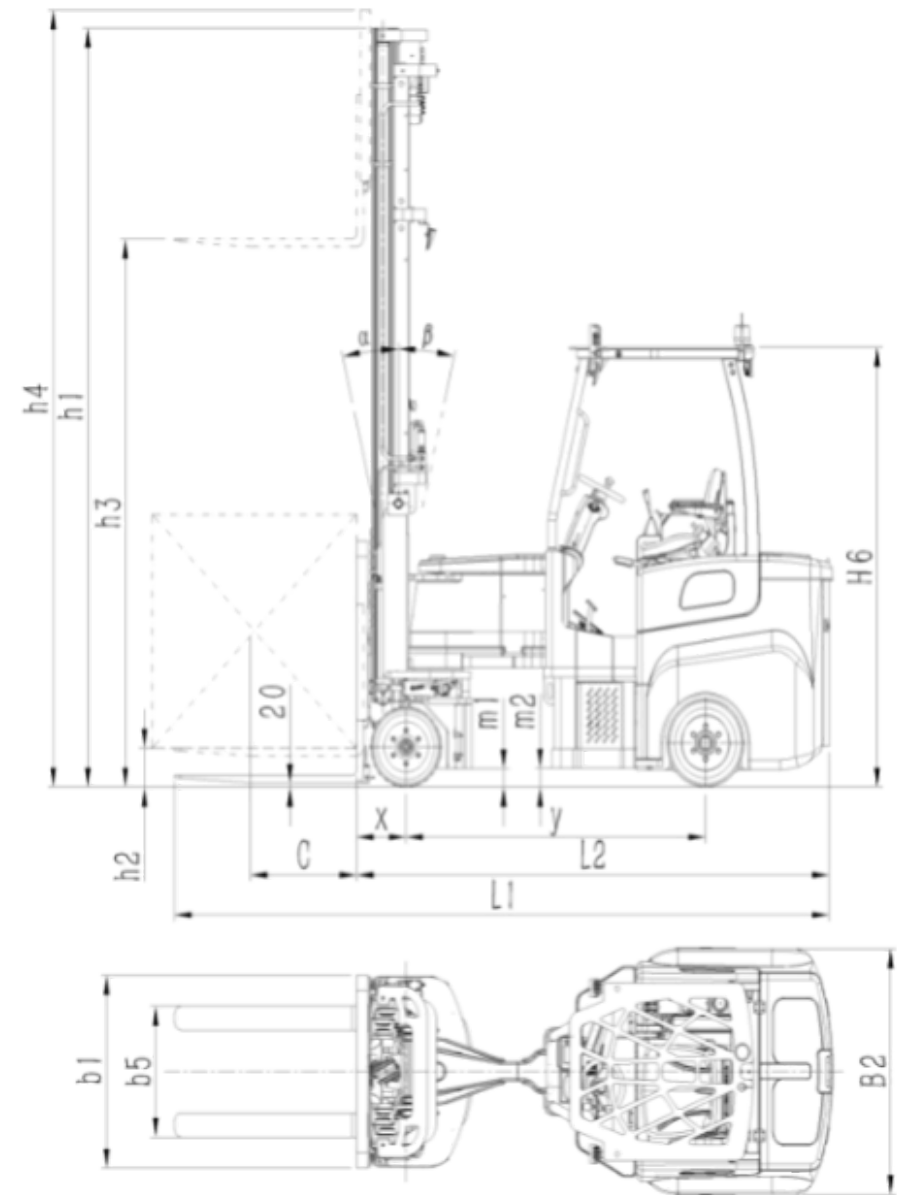
Battery Spec: 80v/460ah

Additional Info:

- Charger : 80V/150a
- Lithium Battery
- Ultra High Narrow Aisle Storage
- 210 Degree Flexible Steering
- Precise Electric Handling
- HD Camera Display

Technical Parameter

Characteristics	1.1	Manufacturer		MIMA	MIMA	
	1.2	Model		MJ20	MJ20	
		Model code		MJ20BSQC(narrow body)	MJ20BSQCH(wide body)	
	1.3	Power type		battery	battery	
	1.4	Operation		Seated	Seated	
	1.5	Load capacity	Q(t)	2	2	
	1.6	Load center distance	C(mm)	600	600	
	1.7	Front overhang	x(mm)	285	285	
Weights	1.8	Wheelbase	y(mm)	1720	1720	
	2.1	Service weight(incl. battery)	kg	7460	8140	
	2.2	Axle loading, laden rear/front	kg	5290/4250	5600/4650	
Wheels	2.3	Axle loading, unladen rear/front	kg	2250/5210	2470/5670	
	3.1	Tyre type		Solid rubber	Solid rubber	
	3.2	Tyre size, front	mm	2×Φ413×178	2×Φ413×178	
	3.3	Tyre size, rear	mm	2×Φ457×178	2×Φ457×229	
	3.4	Wheels, number front/rear (X=driven)		2X/2	2X/2	
	3.5	Track width, front	b10(mm)	800	800	
	3.6	Track width, rear	b11(mm)	1090	1220	
	4.1	Mast/Fork tilt angle front/rear	α/β(°)	1/3	1/3	
	4.2	Mast rotation angle	(°)	210	210	
	4.3	Mast retracted height	h1(mm)	refer to mast parameter table	refer to mast parameter table	
	4.4	Free Lift height	h2(mm)	refer to mast parameter table	refer to mast parameter table	
	4.5	Rated capacity lifting height	mm	3300	3300	
	4.6	Lift height	h3(mm)	4600~10000	4600~12500	
	4.7	Mast extended height	h4(mm)	refer to mast parameter table	refer to mast parameter table	
	4.8	Overhead guard height	h6(mm)	2250	2250	
	4.9	Seat height	h7(mm)	1230	1230	
	Dimensions	4.1	overall length	L1(mm)	3830	3830
		4.11	Body to fork surface length	L2(mm)	2730	2730
		4.12	overall width	b1/b2(mm)	980/1260	980/1400
		4.13	Fork dimentions	s/e/l(mm)	50/100/1100	50/100/1100
		4.14	Installation level		II	II
		4.15	Fork carriage width	b3(mm)	990	990
		4.16	Fork outside spread	b5(mm)	250~890	250~890
4.17		side move distance	mm	±100	±100	
4.18		Ground clearance (laden, below the mast)	m1(mm)	50	50	
4.19		Ground clearance (center of the wheelbase)	m2(mm)	100	100	
4.2		Aisle width with pallet 800*1200mm	mm	1900	2100	
4.21		Efficiency aislez	mm	2000	2200	
4.22		Rack to rack distancez	mm	2200	2400	
4.23		More stacking aisle width	mm	Refer to aisle parameter table	Refer to aisle parameter table	
4.24		Main aisle width with pallet 800*1200mm	mm	2650	2650	
4.35		Turning radius	Wa(mm)	2200	2200	
Performance		5.1	Travelling speed, laden/unladen	km/h	12/13	12/13
		5.2	Lift speed, laden/unladen	mm/s	400/420	400/420
		5.3	Lowering speed, laden/unladen	mm/s	450/400	450/400
		5.4	Gradeability, laden/unladen (S2-5min)	%(tanθ)	15/12	15/12
		5.5	Service brake		Hydraulic	Hydraulic
Drive		6.1	Drive motor, rating S2=60	kw	AC16.3	AC16.3
		6.2	Lift motor, rating S3=15%	kw	AC15	AC15
	6.3	Battery voltage/nominal capacity	(V)/(Ah)	80/500	80/500	
	6.4	Battery weight	kg	1380	1380	
	6.5	Steering system		Hydraulic	Hydraulic	
Others	7.1	Lithium battery voltage/nominal capacity (Stan	(V)/(Ah)	80/460	80/460	



Note:

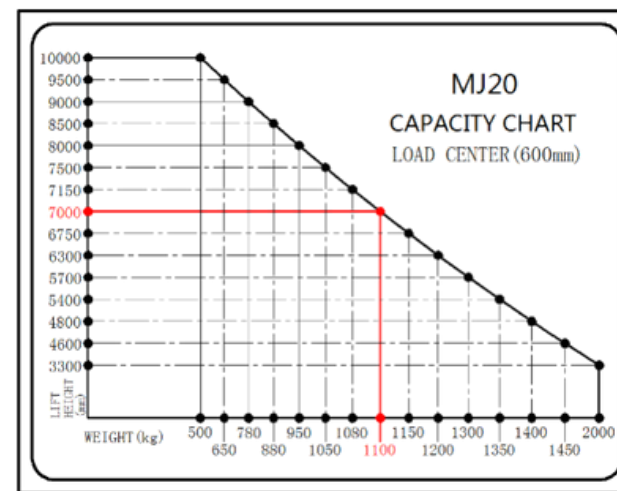
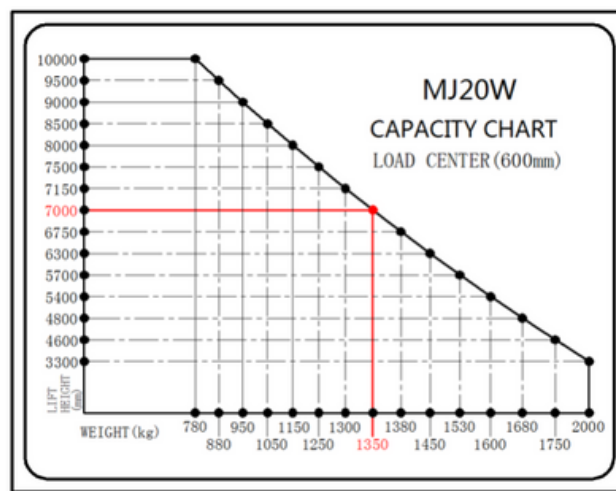
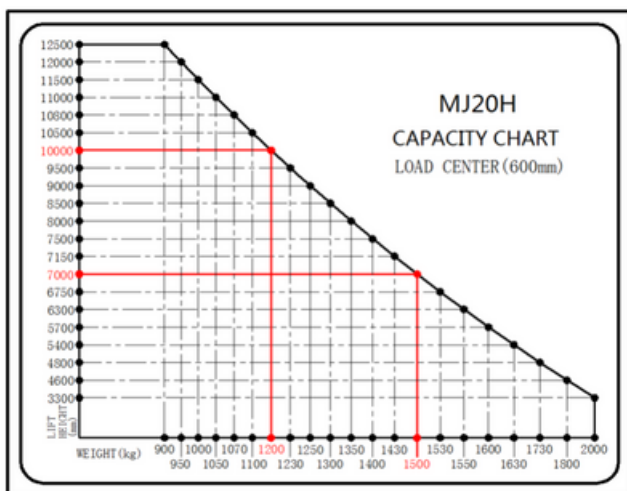
1. The data for the standard models in the series may vary depending on the configuration.
2. The minimum aisle for the narrow aisle goods to goods between the net width, shelf to shelf distance needs to be increased accordingly, it is recommended that +200 or more.
3. The note for the non-smooth dry cement paved road maximum driving speed ramp climbing capacity, ramp start maximum climbing capacity (full/no load) for (12/10), lifting 5 meters below the mast or wide-body models climbing capacity has been reduced.

Load Parameter Comparison Table

MJ20H Wide body

Lifting height mm	Capacity kg							
	12500	12000	11500	11000	10800	10500	10000	9500
	900	950	1000	1050	1070	1100	1200	1230
	850	900	950	990	1010	1050	1160	1160
	810	850	900	940	960	1000	1110	1110
	770	810	860	900	920	940	1030	1050
	730	780	820	860	870	900	980	1000
	700	740	780	820	840	860	940	960
	670	710	750	790	800	820	900	920
	630	670	710	750	770	800	880	900
	600	640	680	720	740	770	850	870
	570	610	650	690	710	740	820	840
	540	580	620	660	680	710	790	810
	510	550	590	630	650	680	760	780
	480	520	560	600	620	650	730	750
	460	500	540	580	600	630	710	730
	440	480	520	560	580	610	690	710
	420	460	500	540	560	590	670	690
	400	440	480	520	540	570	650	670
	380	420	460	500	520	550	630	650
	360	400	440	480	500	530	610	630
	340	380	420	460	480	510	590	610
	320	360	400	440	460	490	570	590
	300	340	380	420	440	470	550	570
	280	320	360	400	420	450	530	550
	260	300	340	380	400	430	510	530
	240	280	320	360	380	410	490	510
	220	260	300	340	360	390	470	490
	200	240	280	320	340	370	450	470
	180	220	260	300	320	350	430	450
	160	200	240	280	300	330	410	430
	140	180	220	260	280	310	390	410
	120	160	200	240	260	290	370	390
	100	140	180	220	240	270	350	370
	80	120	160	200	220	250	330	350
	60	100	140	180	200	230	310	330
	40	80	120	160	180	210	290	310
	20	60	100	140	160	190	270	290
	0	40	80	120	140	170	250	270
	0	20	60	100	120	150	230	250
	0	0	40	80	100	130	210	230
	0	0	20	60	80	110	190	210
	0	0	0	40	60	90	170	190
	0	0	0	20	40	70	150	170
	0	0	0	0	20	50	130	150
	0	0	0	0	0	30	110	130
	0	0	0	0	0	10	90	110
	0	0	0	0	0	0	70	90
	0	0	0	0	0	0	50	70
	0	0	0	0	0	0	30	50
	0	0	0	0	0	0	10	30
	0	0	0	0	0	0	0	10
	0	0	0	0	0	0	0	0

Load center mm



Load Parameter Comparison Table

MJ20 narrow body									
Lifting height mm								Capacity kg	
	10000	500	470	450	430	410	390	370	
	9500	650	620	580	560	530	510	490	
	9000	780	740	700	670	640	610	580	
	8500	880	830	790	750	720	690	660	
	8000	950	900	850	810	780	740	710	
	7500	1050	990	940	900	860	820	790	
	7150	1080	1020	970	920	880	840	810	
	7000	1100	1040	990	940	900	860	820	
	6750	1150	1090	1030	980	940	900	860	
	6300	1200	1140	1080	1030	980	940	900	
	5700	1300	1230	1170	1110	1060	1010	970	
	5400	1350	1280	1210	1160	1100	1050	1010	
	4800	1400	1330	1260	1200	1140	1090	1050	
	4600	1450	1370	1300	1240	1180	1130	1080	
3300	2000	1890	1800	1710	1630	1560	1500		
	600	650	700	750	800	850	900		
Load center mm									

MJ20W half-wide body									
Lifting height mm								Capacity kg	
	12500	/	/	/	/	/	/	/	
	12000	/	/	/	/	/	/	/	
	11500	/	/	/	/	/	/	/	
	11000	/	/	/	/	/	/	/	
	10800	/	/	/	/	/	/	/	
	10500	/	/	/	/	/	/	/	
	10000	800	760	720	680	650	620	600	
	9500	900	850	810	770	730	700	670	
	9000	950	900	850	810	780	740	710	
	8500	1050	990	940	900	860	820	790	
	8000	1150	1090	1030	980	940	900	860	
	7500	1250	1180	1120	1070	1020	980	930	
	7150	1300	1230	1170	1110	1060	1010	970	
	7000	1350	1280	1210	1160	1100	1050	1010	
6750	1380	1310	1240	1180	1130	1080	1030		
6300	1450	1370	1300	1240	1180	1130	1080		
5700	1530	1450	1380	1310	1250	1190	1140		
5400	1600	1510	1440	1370	1310	1250	1200		
4800	1680	1590	1510	1440	1370	1310	1260		
4600	1750	1660	1570	1500	1430	1370	1310		
3300	2000	1890	1800	1710	1630	1560	1500		
	600	650	700	750	800	850	900		
Load center mm									

Stacking aisle parameters comparison table

Pallet Along Forks Size (L)												Swing angle°
mm	1000	1100	1200	1300	1400	1500	1600	1700	1800			
Pallet Cross Forks Size (L)	800	/	/	1900	2050	2150	2250	/	/	/	±105	
	900	/	/	1950	2080	2180	2280	/	/	/		
	1000	1800	1900	2000	2100	2200	2300	2400	2500	2600		
	1100	1830	1930	2030	2130	2230	2330	2430	2530	2630		
	1200	1850	1950	2050	2150	2250	2350	2450	2550	2650	±100	
	1300	1900	2000	2150	2200	2300	2400	2500	2600	2700		
	1400	2000	2100	2200	2300	2400	2500	2600	2700	2800	±95	
	1500	2350	2450	2550	2650	2750	2850	2950	3050	3150	±90	
	1600	2400	2500	2600	2700	2800	2900	3000	3100	3200		

MJ20W Half-wide body MJ20H Wide body												Swing angle°
mm	1000	1100	1200	1300	1400	1500	1600	1700	1800			
Pallet Cross Forks Size (L)	800	/	/	2100	2250	2350	2450	/	/	/	±105	
	900	/	/	2150	2280	2380	2480	/	/	/		
	1000	2000	2100	2200	2300	2400	2500	2600	2700	2800		
	1100	2030	2130	2230	2330	2430	2530	2630	2730	2830		
	1200	2050	2150	2250	2350	2450	2550	2650	2750	2850	±100	
	1300	2100	2200	2300	2400	2500	2600	2700	2800	2900		
	1400	2200	2300	2400	2500	2600	2700	2800	2900	3000	±95	
	1500	2350	2450	2550	2650	2750	2850	2950	3050	3150	±90	
	1600	2400	2500	2600	2700	2800	2900	3000	3100	3200		

Note 1: The above data shows the minimum aisle, for the net aisle width between goods to goods; when the goods extend out of the shelf, the shelf aisle distance needs to be increased accordingly, it is recommended that +200 or more; efficiency net aisle width needs to be +100 or more;

Note 2: When W is more than 1200, the angle of swing head will be less than 210° when the lifting height is less than 2.5 meters, the larger the size, the smaller the angle.

Mast Parameter

Triplex full free mast											
Model	MJ20SQC-	46	48	54	57	63	67	70	71	75	80
Lifting height	h3(mm)	4600	4800	5400	5700	6300	6750	7000	7150	7500	8000
Extended height	h4(mm)	5800	6000	6600	6900	7500	7950	8200	8350	8700	9200
Retracted height	h1(mm)	2818	2885	3085	3185	3385	3485	3568	3618	3734	3900
Free lifting height	h2(mm)	1134	1200	1400	1500	1700	1950	2034	2084	2202	2368

Triplex full free mast											
Model	MJ20SQC-	85	90	95	100	105	108	110	115	120	125
Lifting height	h3(mm)	8500	9000	9500	10000	10500	10800	11000	11500	12000	12500
Extended height	h4(mm)	9700	10200	10700	11200	11700	12000	12200	12700	13200	13700
Retracted height	h1(mm)	4067	4234	4400	4567	4734	4834	4900	5067	5234	5400
Free lifting height	h2(mm)	2534	2700	2868	3034	3200	3300	3368	3534	3700	3868

Note [1]: Wide body type and narrow body type mast parameters are the same;

[2]: If you need special customized specification products, please contact us.

MJ20H Wide body									
Lifting height mm								Capacity kg	
		12500	900	850	810	770	730	700	670
	12000	950	900	850	810	780	740	710	
	11500	1000	950	900	860	820	780	750	
	11000	1050	990	940	900	860	820	790	
	10800	1070	1010	960	920	870	840	800	
	10500	1100	1040	990	940	900	860	820	
	10000	1200	1140	1080	1030	980	940	900	
	9500	1230	1160	1110	1050	1000	960	920	
	9000	1250	1180	1120	1070	1020	980	930	
	8500	1300	1230	1170	1110	1060	1010	970	
	8000	1350	1280	1210	1160	1100	1050	1010	
	7500	1400	1330	1260	1200	1140	1090	1050	
	7150	1430	1350	1290	1220	1170	1120	1070	
	7000	1500	1420	1350	1280	1220	1170	1120	
	6750	1530	1450	1380	1310	1250	1190	1140	
	6300	1550	1470	1390	1330	1270	1210	1160	
	5700	1600	1510	1440	1370	1310	1250	1200	
	5400	1630	1540	1470	1390	1330	1270	1220	
	4800	1730	1640	1560	1480	1410	1350	1290	
	4600	1800	1700	1620	1540	1470	1410	1350	
	3300	2000	1890	1800	1710	1630	1560	1500	



MiMA Forklifts UK
 Unit C Doranda Way,
 Birmingham, West Bromwich
 B71 4LE

0121 368 9288